

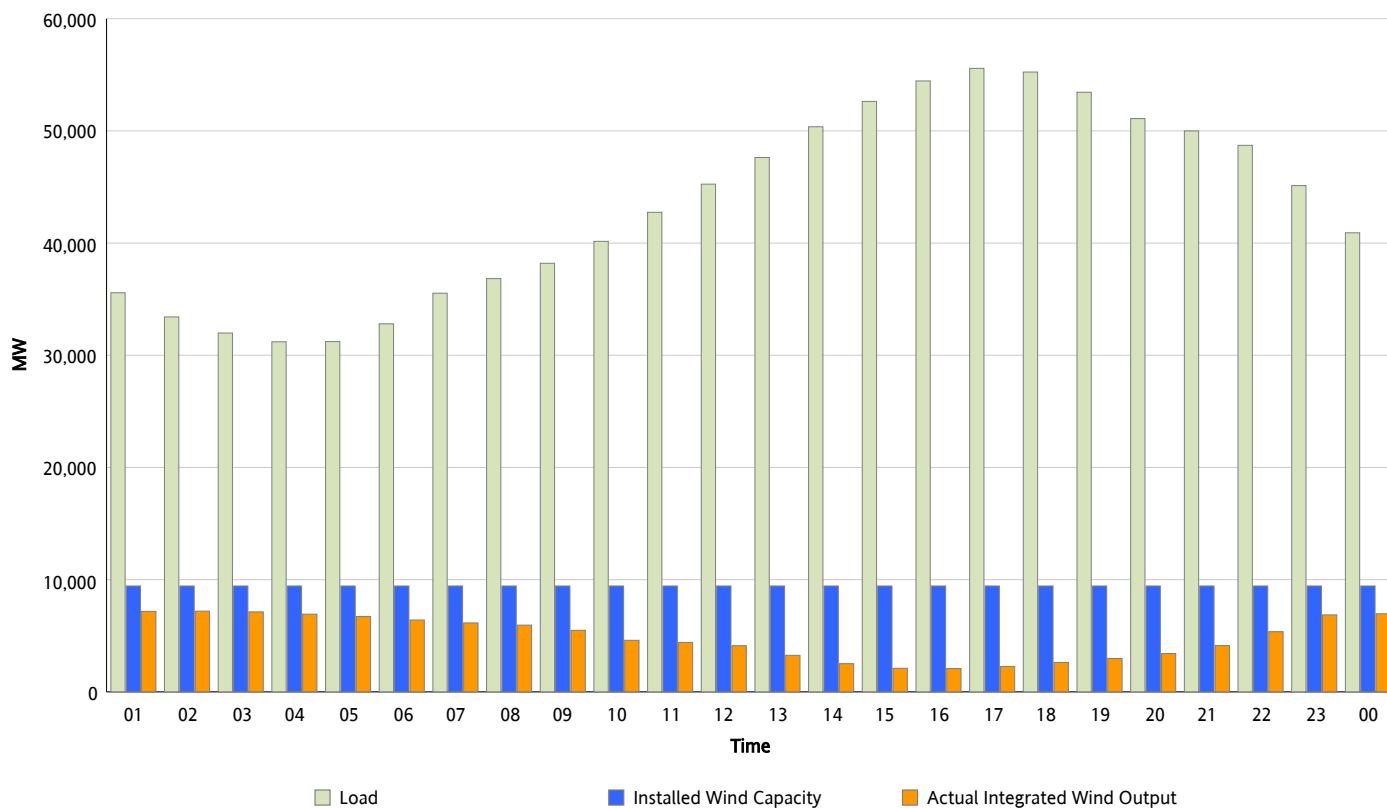


ERCOT Grid Operations

Wind Integration Report : 05/24/2012

Peak Load	55,577 MW
Load Peak Hour (HE)	17
Wind Over Peak	2,258 MW
Wind Record 04/13/12	7,925 MW
Max Wind Value*	7,304 MW
Wind Peak Time	00:00
Wind Integration %	19.74 %

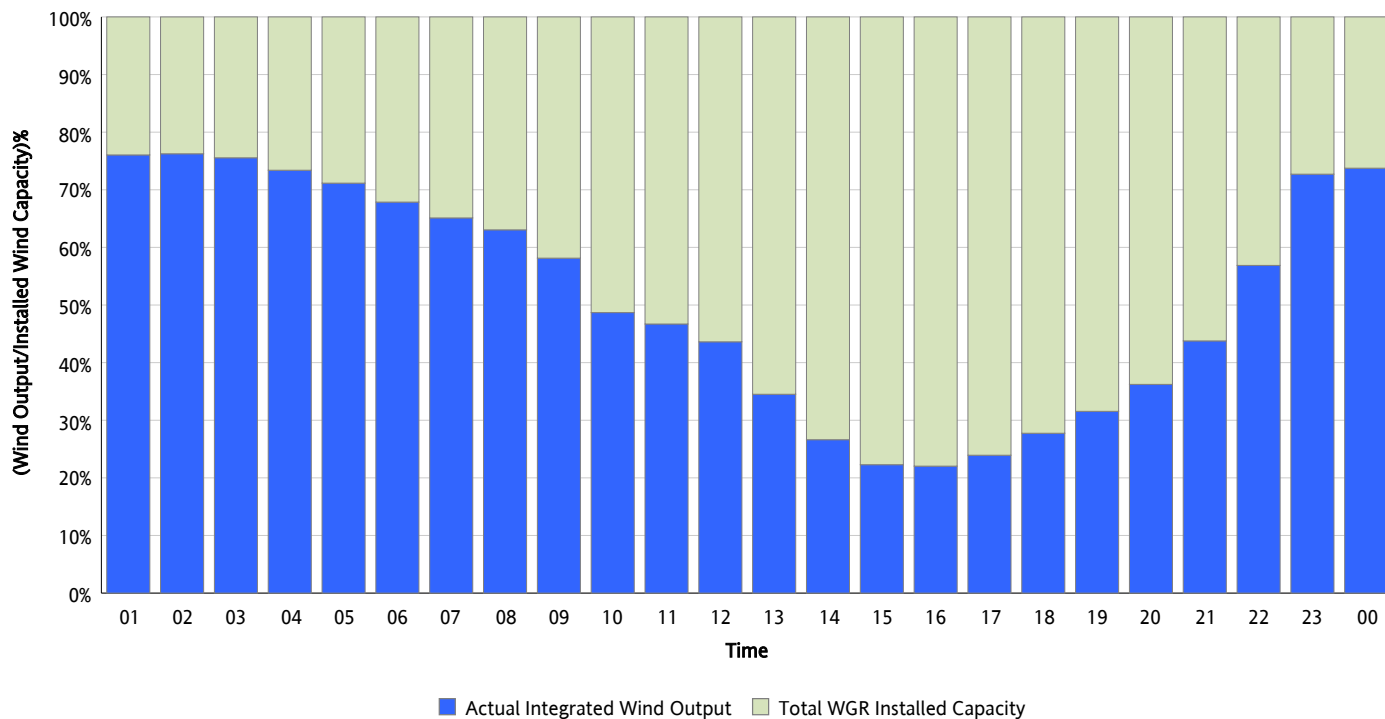
Hourly Average Actual Load vs. Actual Wind Output
05/24/2012



* Wind Record and Wind Max represent instantaneous values and the rest of the values are integrated over the hour

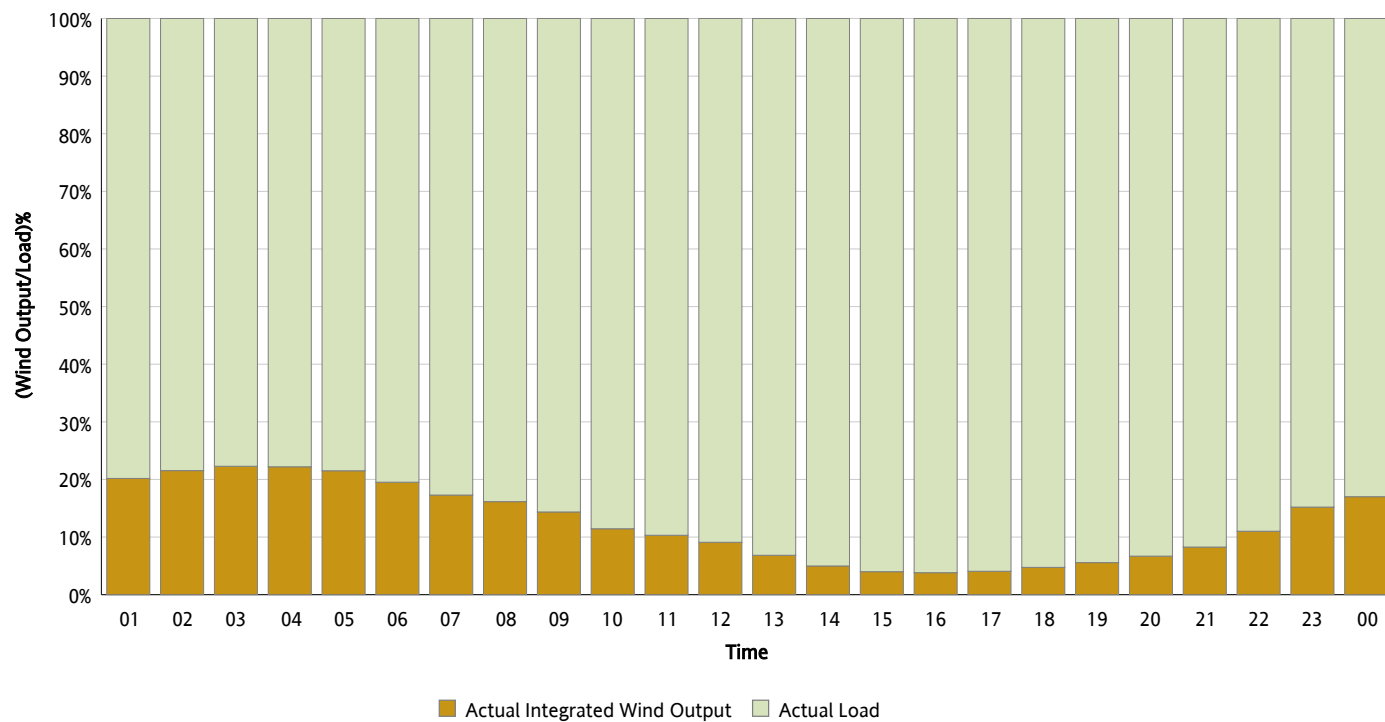
Actual Wind Output as a Percentage of the Total Installed Wind Capacity

05/24/2012



Actual Wind Output as a Percentage of the ERCOT Load

05/24/2012



ERCOT Load vs. Actual Wind Output

05/17/2012 - 05/24/2012

